

Accessories of floor stand cabinet



Fan

ABS synthetic resin, fire resistant and UV-resistant, dustproof coefficient: 80%.
[Purchase the filter together for fan fixing](#)

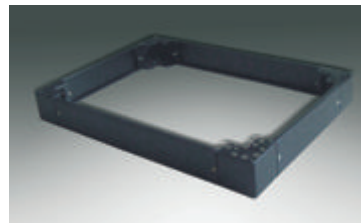
Model	The outer part	Voltage	Current	Air flow
KA1238HA2B	120×120×38mm	220~240VAC	0.13/0.11A	120/140CFM
KA1725HA2B	φ172×55mm	220~240VAC	0.13/0.12A	218/245CFM
KA2206HA2B-2P	φ220×60mm	220~240VAC	0.25/0.18A	430/490CFM
KA2509HA2B-2P	φ254×89mm	220~240VAC	0.28/0.22A	666/730CFM



Filter [Purchase the fan together for filter fixing for customer choice](#)

Model	The outer part	Efficient blast volume	level of protection	Applicable blower fan
FU-9803A	148.5×148.5×13.5mm	25.0m ³ /min	IP44	KA1238HA2B
FU-9804A	204×204×13.5mm	50.0m ³ /min	IP44	KA1725HA2B
FU-9805A	255×255×13.5mm	80.0m ³ /min	IP44	KA2206HA2B-2P
FU-9806A	320×320×13.5mm	120m ³ /min	IP44	KA2509HA2B-2P

Plinth for AR8000/AR9000 cabinet



Standard plinth:

Height=100mm(H100), Height=200mm(H200)

Material: manufactured in 2.5mm sheet steel with 8pcs fixing screws M6X16mm

paint finish: epoxy polyester powder coating textured finish
 Color:RAL6022 black

Supply include: plinth with fixing accessories

Pack:1 piece

Model		Cabinet size(mm)	
H100	H200	Width	Depth
PL1 35	PL2 35	300	500
PL1 36	PL2 36	300	600
PL1 38	PL2 38	300	800
PL1 45	PL2 45	400	500
PL1 46	PL2 46	400	600
PL1 64	PL2 64	600	400
PL1 65	PL2 65	600	500
PL1 66	PL2 66	600	600

Model		Cabinet size(mm)	
H100	H200	Width	Depth
PL1 86	PL2 86	800	600
PL1 88	PL2 88	800	800
PL1 104	PL2 104	1000	400
PL1 105	PL2 105	1000	500
PL1 106	PL2 106	1000	600
PL1 108	PL2 108	1000	800
PL1 124	PL2 124	1200	400
PL1 125	PL2 125	1200	500



WA 065 ring

model: WA 065

Material: zinc-coated metal iron fixing on the top of the cabinet for lifting the cabinet more easily

Supply include: Rings

Pack: 4pcs/set



Door keep

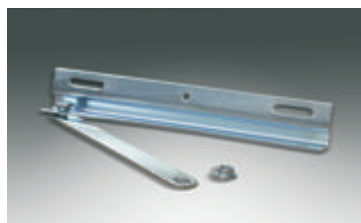
Model: DS001

Material: ABS, black color

Always keep the door in the straight level for AR8000, AR9000 cabinet

Supply include: door keep

package: 1 piece



Door stop

Model: WA100

Material: Manufactured in galvanised sheet steel 1.5mm, to keep the door in the open state for AR8000, AR9000 cabinet, when opening the doors

Supply include: door stop

Package: 1 piece