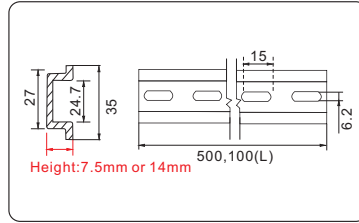
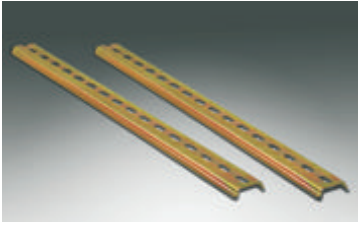


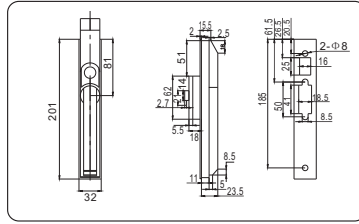
Accessories of floor stand cabinet



C35 rail

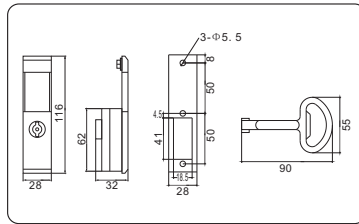
Model	Height(mm)
C7.5-2m	7.5
C14-2m	14

C35 rail is to be fixed on the cabinet to hold electronic components (circuit breaker, DIN-panel meter, etc)
 Material: rainbow colored steel sheet 1.0mm thickness, 2 metros
 Supply include: C35 rail Package: 1 piece



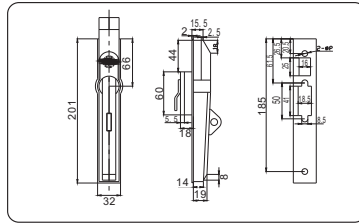
Cabinet lock

Model: MS830
 Material: ABS and iron
 For the door lock in the cabinet AR9000 or AR8000
 Supply include: 1pcs/set with lock system, key and fixing accessories
 Package: 1 piece



Cabinet lock

Model: MS 821



Cabinet lock

Model: MS 830-6P-1
 Material: ABS and iron
 For the door lock in the cabinet AR9000 or AR8000, for pad lock standard, pad lock is offered separately
 Supply include: 1pcs/set with lock system, key and fixing accessories
 Package: 1 piece



130° Door Hinge

Model: TJ-CH130
 Material: steel iron, zinc-plating, door hinge for Ar9000 or AR8000 cabinet
 Supply include: door hinge
 Package: 6pcs/set



Common screw

Model: Screw M5X10mm
 Material: Steel, zinc-plating, used for cabinet profiles, punching rail and punching material
 Supply include: screw M5 X 10mm
 Pack: 100pcs/set



Sealing rubber strip

Model: RUB001
 Material: rubber, width 15mm
 By sealing the gap between two cabinets
 Supply include: sealing rubber strip
 Package: 10 metro/roll