



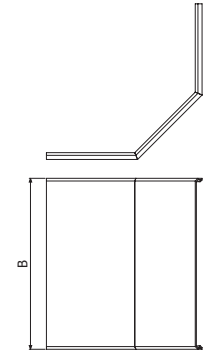
TCCBPE



	B		PVC M1 UV	
	mm	inch	REF.	kg/ud
TCCBPE 60X100	100	4"	2/10111	0,18
TCCBPE 60X150	150	6"	2/10112	0,24
TCCBPE 60X200	200	8"	2/10113	0,37
TCCBPE 60X300	300	12"	2/10114	0,52
TCCBPE 100X200	200	8"	2/10115	0,56
TCCBPE 100X300	300	12"	2/10116	0,61
TCCBPE 100X400	400	16"	2/10117	0,87
TCCBPE 100X600	600	24"	2/10118	1,04



TCCBPE 100X600



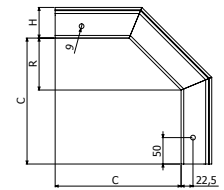
CXBPE



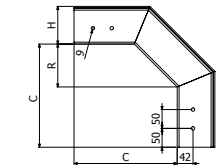
	H	B		C		R		PVC M1 UV		
		mm	inch	mm	inch	mm	inch	REF.	kg/ud	
CXBPE 60X100	60	2 3/8"	100	4"	240	9 1/2"	100	4"	2/10119	0,39
CXBPE 60X150	60	2 3/8"	150	6"	240	9 1/2"	100	4"	2/10120	0,49
CXBPE 60X200	60	2 3/8"	200	8"	240	9 1/2"	100	4"	2/10121	0,78
CXBPE 60X300	60	2 3/8"	300	12"	240	9 1/2"	100	4"	2/10122	1,19
CXBPE 100X200	100	4"	200	8"	275	10 5/6"	115	4 5/8"	2/10123	1,37
CXBPE 100X300	100	4"	300	12"	275	10 5/6"	115	4 5/8"	2/10124	1,98
CXBPE 100X400	100	4"	400	16"	275	10 5/6"	115	4 5/8"	2/10125	2,55
CXBPE 100X600	100	4"	600	24"	275	10 5/6"	115	4 5/8"	2/10126	3,23



2 x JUBPE 60 (2/10084)
2 x JUBPE 100 (2/10085)



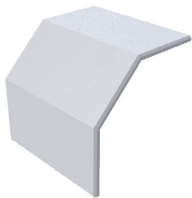
H60



H100



TCXBPE



	B		PVC M1 UV	
	mm	inch	REF.	kg/ud
TCXBPE 60X100	100	4"	2/10127	0,22
TCXBPE 60X150	150	6"	2/10128	0,30
TCXBPE 60X200	200	8"	2/10129	0,49
TCXBPE 60X300	300	12"	2/10130	0,65
TCXBPE 100X200	200	8"	2/10131	0,75
TCXBPE 100X300	300	12"	2/10132	0,82
TCXBPE 100X400	400	16"	2/10133	1,17
TCXBPE 100X600	600	24"	2/10134	1,39



TCXBPE 100X600

