



BPE H60

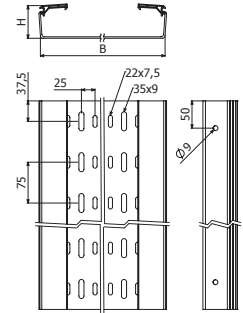


	H		B		PVC M1 UV	
	mm	inch	mm	inch	REF.	kg/m
BPE 60X100	60	2 3/8"	100	4"	2/10070	0,73
BPE 60X150	60	2 3/8"	150	6"	2/10071	0,98
BPE 60X200	60	2 3/8"	200	8"	2/10072	1,45
BPE 60X300	60	2 3/8"	300	12"	2/10073	2,34



L = 3 m (10 ft)

2 x JUBPE 60 (2/10084)



BPE-C H60

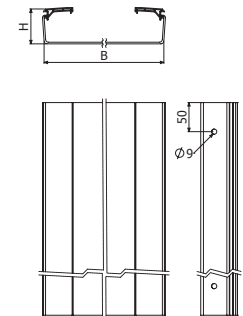


	H		B		PVC M1 UV	
	mm	inch	mm	inch	REF.	kg/m
BPE-C 60X100	60	2 3/8"	100	4"	2/10062	0,77
BPE-C 60X150	60	2 3/8"	150	6"	2/10063	1,03
BPE-C 60X200	60	2 3/8"	200	8"	2/10064	1,54
BPE-C 60X300	60	2 3/8"	300	12"	2/10065	2,48

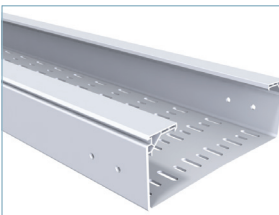


L = 3 m (10 ft)

2 JUBPE 60 (2/10084)



BPE H100

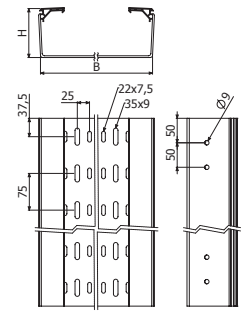


	H		B		PVC M1 UV	
	mm	inch	mm	inch	REF.	kg/m
BPE 100X200	100	4"	200	8"	2/10074	2,25
BPE 100X300	100	4"	300	12"	2/10075	3,63
BPE 100X400	100	4"	400	16"	2/10076	4,30
BPE 100X600	100	4"	600	24"	2/10077	6,40



L = 3 m (10 ft)

2 x JUBPE 100 (2/10085)



BPE-C H100

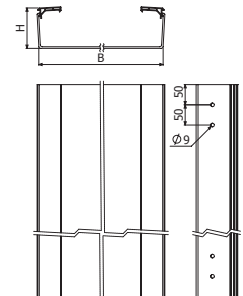


	H		B		PVC M1 UV	
	mm	inch	mm	inch	REF.	kg/m
BPE-C 100X200	100	4"	200	8"	2/10066	2,38
BPE-C 100X300	100	4"	300	12"	2/10067	3,45
BPE-C 100X400	100	4"	400	16"	2/10068	4,54
BPE-C 100X600	100	4"	600	24"	2/10069	6,72



L = 3 m (10 ft)

2 x JUBPE 100 (2/10085)



TBPE



	B		PVC M1 UV	
	mm	inch	REF.	kg/m
TBPE 100	100	4"	2/10078	0,37
TBPE 150	150	6"	2/10079	0,50
TBPE 200	200	8"	2/10080	0,77
TBPE 300	300	12"	2/10081	1,10
TBPE 400	400	16"	2/10082	1,53
TBPE 600	600	24"	2/10083	2,10



L = 3 m (10 ft)

TBPE 600

