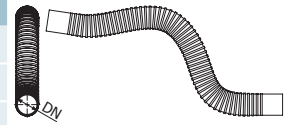


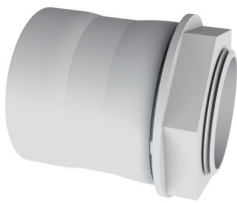
CFR2



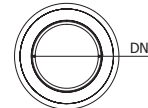
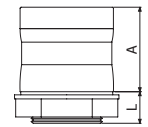
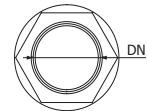
	DN		L		IP	PVC 7035	
	mm	inch	mm	inch		REF	MOQ
CFR2 16	16	5/8"	280	8 11"	64	207432	12 U
CFR2 20	20	3/4"	280	11"	64	207433	40 U
CFR2 25	25	1"	340	13 1/2"	64	207434	20 U
CFR2 32	32	1 1/4"	380	15"	64	207435	20 U



MCR1250



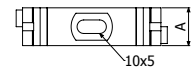
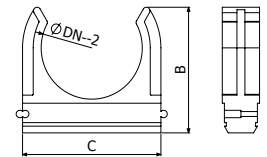
	DN		L	A	IP	RLH 7035	
	mm	inch	mm	mm		REF	MOQ
MCR1250 16	16	5/8"	15	42	67	206746	25 U
MCR1250 20	20	3/4"	15	44	67	206747	25 U
MCR1250 25	25	1"	15	47	67	206748	25 U
MCR1250 32	32	1 1/4"	16	52	67	206749	15 U
MCR1250 40	40	1 5/8"	16	64	67	206750	10 U
MCR1250 50	50	2"	18	72	67	206751	5 U



SPR1250



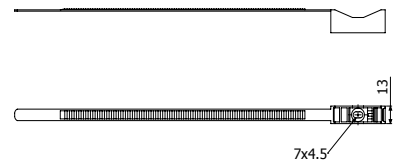
	DN		A		B		C		F	RLH 7035	
	mm	inch	mm	inch	mm	inch	mm	inch	kg	REF	MOQ
SPR1250 16	16	5/8"	12	1/2"	25	1"	21	13/16"	3	206753	100 U
SPR1250 20	20	3/4"	12	1/2"	28	1 1/8"	26	1"	3	206754	100 U
SPR1250 25	25	1"	12	1/2"	32	1 1/4"	31	1 1/4"	3	206755	100 U
SPR1250 32	32	1 1/4"	12	1/2"	43	1 3/4"	44	1 3/4"	3	206756	50 U
SPR1250 40	40	1 5/8"	14	9/16"	50	2"	52	2"	3	206757	50 U
SPR1250 50	50	2"	14	9/16"	56	2 1/4"	62	2 1/2"	3	206758	25 U



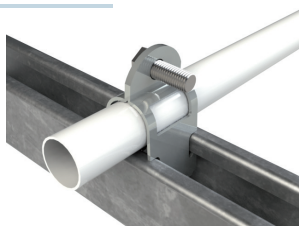
ABR1250



	DN		F	RLH 7035	
	mm	inch	kg	REF	MOQ
ABR1250 16-32	16-32	5/8" - 1 1/4"	15	206760	50 U
ABR1250 20-63	20-63	3/4" - 2 1/2"	15	206761	100 U



BFT-41



	Dn	e	EZ	
	mm	mm	REF	MOQ
BFT-P41 20	17,9-20	1,5	206811	100 U
BFT-P41 25	23,4-25,4	1,5	206812	100 U
BFT-P41 32	29,5-32	1,5	206813	100 U
BFT-P41 40	38,4-40,6	2	206814	100 U
BFT-P41 50	50,3-53,7	2	206815	100 U

