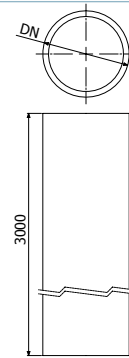
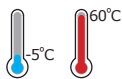
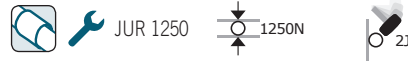




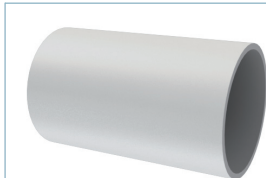
**R1250 PVC**



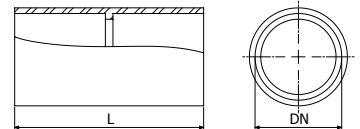
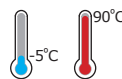
	DN		UNE-EN 61386	IK	PVC 7035	
	mm	inch			REF.	kg/m
R1250 16	16	5/8"	4321	07	2/6460	0,11
R1250 20	20	4/5"	4321	07	2/6461	0,16
R1250 25	25	1"	4321	07	2/6462	0,22
R1250 32	32	1 1/4"	4321	07	2/6463	0,30
R1250 40	40	1 4/7"	4321	07	2/6464	0,40
R1250 50	50	2"	4321	07	2/6465	0,54
R1250 63	63	2 1/2"	4321	07	2/6466	0,78



**JUR1250**



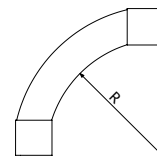
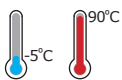
	DN		L		IP	RLH 7035	
	mm	inch	mm	inch		REF.	kg/ud
JUR1250 16	16	5/8"	50	2"	40	2/6732	0,01
JUR1250 20	20	4/5"	55	2 1/6"	40	2/6733	0,01
JUR1250 25	25	1"	60	2 3/8"	40	2/6734	0,01
JUR1250 32	32	1 1/4"	70	2 3/4"	40	2/6735	0,02
JUR1250 40	40	1 4/7"	80	3 1/7"	40	2/6736	0,03
JUR1250 50	50	2"	90	3 1/2"	40	2/6737	0,04
JUR1250 63	63	2 1/2"	130	5 1/8"	40	2/6738	0,05



**CPR**



	DN		R		IP	RLH 7035	
	mm	inch	mm	inch		REF.	kg/ud
CPR 16	16	5/8"	54	2 1/8"	40	2/6739	0,01
CPR 20	20	4/5"	67	2 2/3"	40	2/6740	0,02
CPR 25	25	1"	85	3 1/3"	40	2/6741	0,04
CPR 32	32	1 1/4"	110	4 1/3"	40	2/6742	0,07
CPR 40	40	1 4/7"	138	5 3/7"	40	2/6743	0,10
CPR 50	50	2"	172	6 7/9"	40	2/6744	0,18



**CFR**



	DN		L		IP	RLH 7035	
	mm	inch	mm	inch		REF.	kg/ud
CFR 16	16	5/8"	220	8 2/3"	65	2/6819	0,08
CFR 20	20	4/5"	230	9"	65	2/6820	0,10
CFR 25	25	1"	540	9 4/9"	65	2/6821	0,11
CFR 32	32	1 1/4"	270	10 5/8"	65	2/6822	0,12
CFR 40	40	1 4/7"	300	11 4/5"	65	2/6823	0,13
CFR 50	50	2"	340	13 2/5"	65	2/6824	0,14

