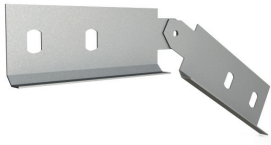


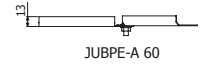
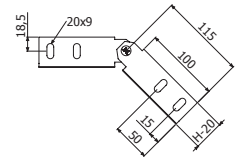


**JUBPE-A**

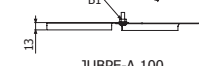
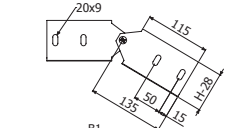


	H		i304	
	mm	inch	REF.	kg/ud
JUBPE-A 60	60	2 3/8"	2/5036	0,09
JUBPE-A 100	100	4"	2/5037	0,16

4/100 x CTBP (2/10017)



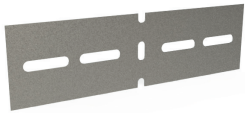
JUBPE-A 60



JUBPE-A 100

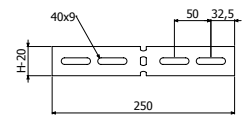


**JUBPE-B**

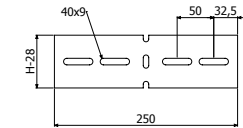


	H		i304	
	mm	inch	REF.	kg/ud
JUBPE-B 60	60	2 3/8"	2/3520	0,13
JUBPE-B 100	100	4"	2/5038	0,22

4/100 x CTBP (2/10017)



JUBPE-B 60



JUBPE-B 100



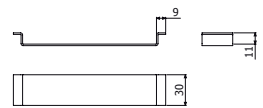
**BIK10-BPE**



	e mm	Mod. H x B	i304		i316	
			REF.	kg/ud	REF.	kg/ud
BIK10-BPE 60X100	1,5	60x100	2/17340	0,03	2/17347	0,03
BIK10-BPE 60X150	1,5	60x150	2/17341	0,05	2/17348	0,05
BIK10-BPE 60/100x200	1,5	60X200 & 100X200	2/17342	0,07	2/17349	0,07
BIK10-BPE 60/100X300	1,5	60X300 & 100X300	2/17343	0,09	2/17350	0,09
BIK10-BPE 100X400	2	100X400	2/17345	0,20	2/17352	0,20
BIK10-BPE 100X600	2	100X600	2/17346	0,49	2/17353	0,49



3 x BIK10-BPE => 1 x TBPE



**CTBP**



	PVC M1 UV	
	REF.	kg/ud
CTBP-100	2/10017	0,40

