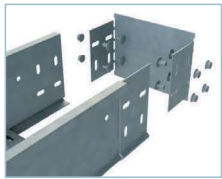




REFE



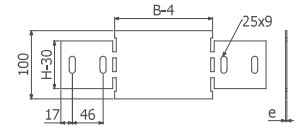
REFE H75/100/120



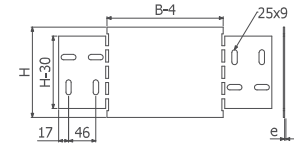
REFE H150

	B		H		e	GC	
	mm	inch	mm	inch		REF.	kg/ud
REFE 50x75x2	50	2"	75	3"	2	206803	0,17
REFE 100x75x2	100	4"	75	3"	2	206804	0,23
REFE 150x75x2	150	6"	75	3"	2	206805	0,30
REFE 200x75x2	200	8"	75	3"	2	206806	0,36
REFE 50x100x2	50	2"	100	4"	2	206807	0,26
REFE 100x100x2	100	4"	100	4"	2	206808	0,34
REFE 150x100x2	150	6"	100	4"	2	206809	0,43
REFE 200x100x2	200	8"	100	4"	2	206810	0,51
REFE 50x120x2	50	2"	120	4 5/7"	2	206954	0,33
REFE 100x120x2	100	4"	120	4 5/7"	2	206955	0,43
REFE 150x120x2	150	6"	120	4 5/7"	2	206956	0,53
REFE 200x120x2	200	8"	120	4 5/7"	2	206957	0,63
REFE 50x150x2	50	2"	150	6"	2	206958	0,42
REFE 100x150x2	100	4"	150	6"	2	206959	0,55
REFE 150x150x2	150	6"	150	6"	2	206960	0,67
REFE 200x150x2	200	8"	150	6"	2	206961	0,80

4/100 x B2 (206792 - GC) / 8/100 x B2 ↑150



REFE H75/100/120



REFE H150

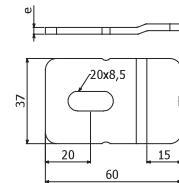
BFE



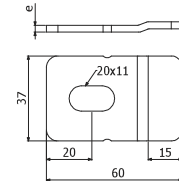
	e	GC		e	i304		i316	
		mm	REF.		kg/ud	mm	REF.	kg/ud
BFE 6/8	3	200863	0,03	1,5	203293	0,03	-	-
BFE 10	3	200864	0,04	1,5	218531	0,03	218532	0,03

BFE 6/8 --> SHL --> B2 (206792 - GC)

SP/SPD + BEF 10 --> DIN933 10X30 (217547- i304) + TM41 M10 (217584 - GC) + DIN125 M10 (217542-i304)

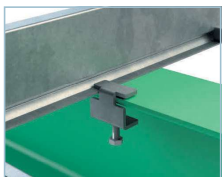


BFE 6/8



BFE 10

BEV



	GC		i304		i316	
	REF.	Kg/ud	REF.	kg/ud	REF.	kg/ud
BEV	211805	0,07	214473	0,05	218574	0,05

